



# CHRISTOPHE RONCATO TOUNSI

SENIOR LECTURER AT UGA  
COORDINATOR OF THE MASTER'S PROGRAM RESOURCES, ENVIRONMENT AND SOCIETIES  
IN TRANSITION (RESET)

**Talk's title: Move it: mobility in transition**

# Project rationale

## Move it: mobility in transition

### 4 key words:

- 1) **Transportation** (as a key sector of the transition, representing 24% of GHG emissions globally and 50% in California)
- 2) **California:** as an emblematic region of the North and when it comes to environmental regulations
- 3) **Environmental history** and **industrial ecology:** two lenses to study transportations systems in transition

### One key question:

How to you go from this



to that?



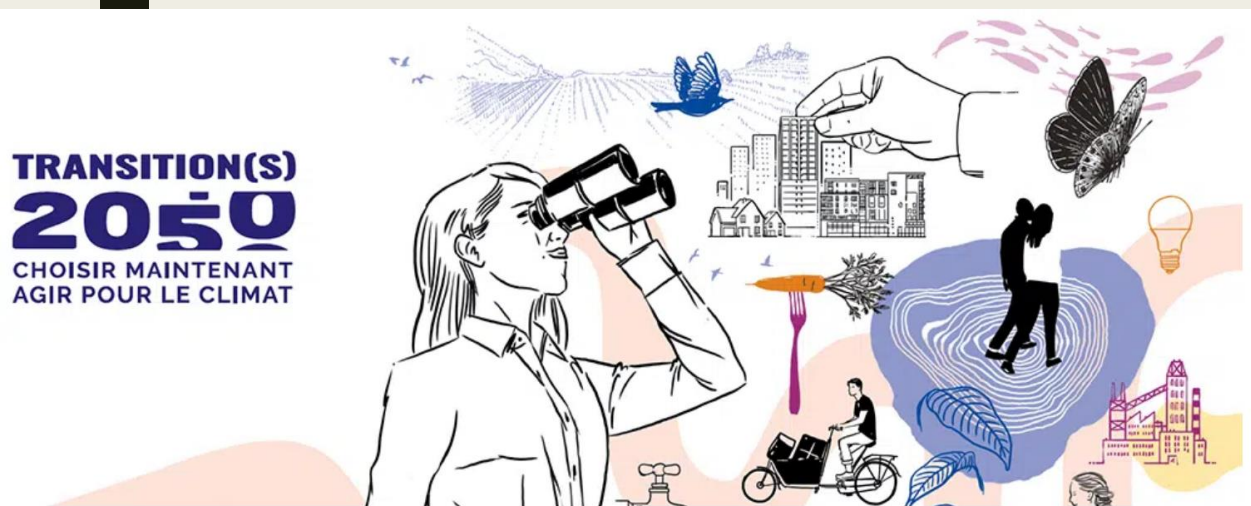
# Transition scenarios as a key instrument to organize sectoral transitions

Three families of scenarios:

- Climate change scenarios
- Climate impact scenarios
- **Transition scenarios**



Transition scenarios “explore the different possible low-carbon transitions: they describe changes in socio-economic systems that are compatible with achieving a climate target.” (IC4E)



# California's transition scenario: the Scoping Plan

2022 SCOPING PLAN FOR ACHIEVING  
CARBON NEUTRALITY  
NOVEMBER 16, 2022



**Overall ambition:** “to lay out a path to achieve targets for carbon neutrality and reduce anthropogenic greenhouse gas (GHG) emissions by 85 percent below 1990 levels no later than 2045”.

**Key assumptions:**

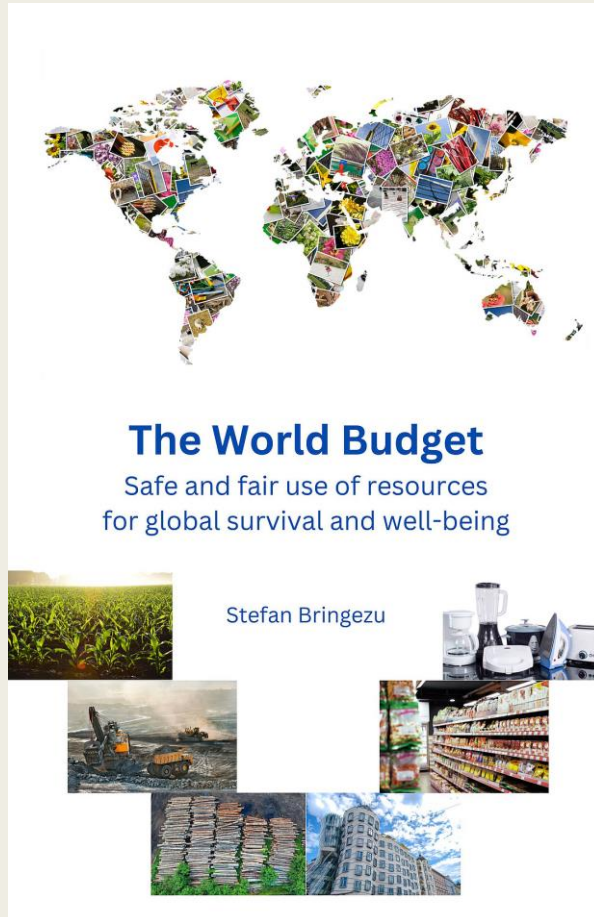
- 1) Decoupling
- 2) GHG accountability based on the IPCCs
- 3) GHG emissions as sole socio-ecological indicator
- 4) The transportation sector: technology, fuels, VMT

# Questioning the key assumptions of the Scoping Plan through a resource-oriented approach

- 1) The Scoping Plan does not quantify the needs in natural resources
- 2) Re-introducing natural resources in the scenario leads to different conclusions on key assumptions and is central to a socially, environmentally just and realistic transition.



# Reshaping the Scoping Plan so as to make it fit Planetary Boundaries



From a resource-oriented perspective and if California were to meet its social and environmental goals it should:

- 1) Integrate a material footprint indicator
- 2) Downsize every mean of transport
- 3) Reform institutions
- 4) Take into account long-term dynamics

# Conclusion

- The Scoping Plan is no exception, other transition scenarios have the same objectives and rely on the same assumptions
- Sufficiency should be central to transition scenarios
- Research at the crossroads of quantitative and qualitative methods/figures and narratives can help reshape scenarios
- Alternative resource-oriented scenarios are needed