

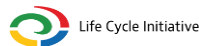
HOTSPOT ANALYSIS TOOL FOR SUSTAINABLE CONSUMPTION AND PRODUCTION

to support science-based national policy frameworks





Rethinking Value - Resources for
Planetary Wellbeing
World Resources Forum 2023

Dr. Stephan L
Institute for Ecological Econo
Vienna University of Economics and Busi



The relevance of sustainable consumption and production (SCP)



- UNEP: “Sustainable Consumption and Production (SCP) can contribute substantially to poverty alleviation and the transition towards low-carbon and green economies”
- Rio+20: Creation of 10-Year Framework of Programmes on SCP (10YFP)  
- Standalone goal (SDG-12) on SCP → Target 12.1 calls for implementation of 10YFP in all countries
- SCP as cross-cutting topic – strong relation to climate action and sustainable supply chains
- Many countries lack expertise as well as technical and financial resources to
 - Carry out overarching assessments to identify hotspot areas of unsustainable production and consumption
 - Provide information on related drivers
 - Cover more complex, i.e. supply-chain wide impacts
- Aim: Support achievement of SDG-12 through comprehensive and scientifically sound empirical analyses
 - SCP-HAT – Sustainable Consumption and Production Hotspots Analysis Tool



The SCP Hotspots Analysis Tool (SCP-HAT)...



- ...can be found at scp-hat.lifecycleinitiative.org;
- ...was commissioned by three UNEP organisations - the Life Cycle Initiative together with the One Planet Network and the International Resource Panel;
- ...is a state-of-the-art user-friendly online tool for easy access;
- ...aims at supporting science-based policy frameworks for SCP;
- ...identifies hot spot areas of unsustainable production and consumption, to support setting priorities in national SCP and climate policies;
- ...identifies hotspots related to domestic and supply-chain-wide pressures and impacts;
- ...is based upon environmentally-extended input-output modelling combined with LCA;
- ...was developed by WU Vienna, in collaboration with CSIRO and kindly supported by Sydney University (GLORIA database).

SCP-HAT provides...

- ...key information on a country's environmental performance and policy context (Module 1)
- ...a wide range of SCP indicators and analytical options for hotspots analysis (Module 2) of...
 - ...the national level
 - ...the sector level
 - ...individual supply chains
- ...tailored analyses with key visualisations and adaptive text ('Standard Reports')
- ...open access data and clear method description ('Methods & Data')
- ...a wealth of gadgets to improve user-friendliness

Germany - at a glance



Home > NDC.development > Country overview

I want to get an overview of the country's GHG emission performance.

This standard report provides insights from different perspectives into a country's SCP performance regarding GHG emissions and related climate change impacts.

WHERE CAN I FIND THIS?

- Module Standard Reports
 - Climate change impact hotspots
 - select country

EXAMPLE

CLIMATE CHANGE IMPACT HOTSPOTS

Find out more about a selected country's **dependency on foreign resources**. The pressures and impacts caused along the supply chains of imported and exported products are compared to understand if the country is a net importer or net exporter of pressures and impacts, and to what extent the country's environmental consumption footprint has domestic and foreign sources.

SCP HAT Module 1 - C...

Sustainability trend (1990-2015) | Trade | Country comparison (2015)

This country achieved **relative decoupling** of economic development from raw material consumption.

Imports (Exports) (in Million Tonnes)

Country comparison (2015)

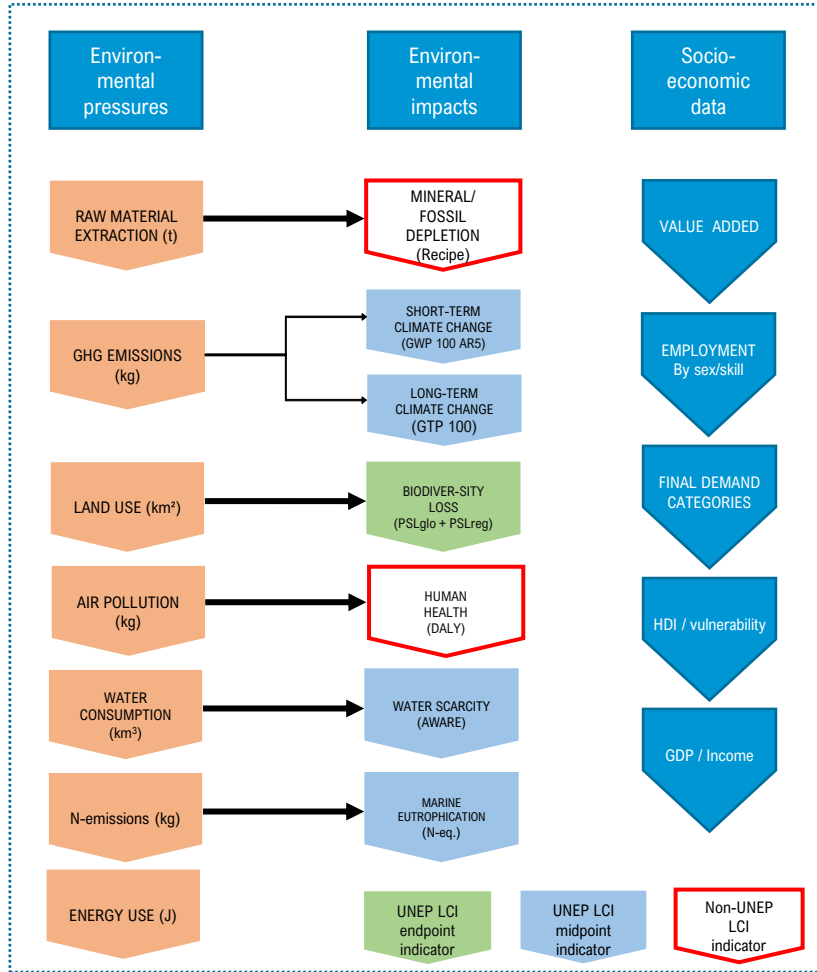
Country	Value
(44) Japan	~18
(46) Germany	~15
(45) Saudi Arabia	~12
Global average	~10

Selected country: Germany (orange)
Other country: Japan (blue)
Region: Saudi Arabia (red)

shows that Germany ranked 29., 24.5 % above the regional average of 16.3 tonnes per capita.

SCP-HAT – coverage and thematic linkages

Current SDG coverage



Linkages to other topics



EU Green Deal:
Fit for 55 package



United Nations

Climate Action

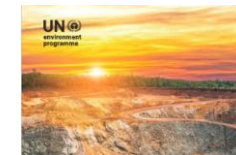
Nationally Determined Contribution (NDC)



EU Due Diligence Act



Government Footprints



Un/Sustainability in the Mining Sector

An outlook to further developments

- Implement broad concept of uncertainty of visualised indicators
- Enlarging SCP-HAT's coverage of metal mining and processing sectors
- Expanding the options to analyse supply chains
- Develop ppp-adjusted sectoral emission intensity ratios
- Focus on individual high-impact sectors
- Develop a new section featuring news and developments with regard to SCP-HAT



VIENNA UNIVERSITY OF
ECONOMICS AND BUSINESS

DEPARTMENT SOCIOECONOMICS

Institute for Ecological Economics
Welthandelsplatz 1, 1020 Vienna,
Austria

DR. STEPHAN LUTTER

T +43-1-313 36-5754
stephan.lutter@wu.ac.at
www.wu.ac.at

scp-hat.lifecycleinitiative.org

(or just google „SCP-HAT“)